

A stylized topographic map with green contour lines is positioned on the left side of the page, extending from the top left towards the bottom left.

207 Broulee Road, Broulee NSW – Aboriginal and Historic Heritage Constraints Assessment

Brightlands Living

DOCUMENT TRACKING

Project Name	207 Broulee Road, Broulee NSW – Aboriginal and Historic Heritage Desktop Constraints Assessment
Project Number	22SYD - 3362
Project Manager	Charlotte Bradshaw
Prepared by	Kate Storan
Reviewed by	Karyn McLeod
Approved by	Karyn McLeod
Status	Final
Version Number	v1
Last saved on	30 August 2022

This report should be cited as 'Eco Logical Australia, 2022. 207 Broulee Road, Broulee NSW – Aboriginal and Historic Heritage Desktop Constraints Assessment. Prepared for Brightlands Living.'

ACKNOWLEDGEMENTS

This document has been prepared by Eco Logical Australia Pty Ltd with support from Rhys George.

Disclaimer

This document may only be used for the purpose for which it was commissioned and in accordance with the contract between Eco Logical Australia Pty Ltd and Brightlands Living. The scope of services was defined in consultation with Brightlands Living, by time and budgetary constraints imposed by the client, and the availability of reports and other data on the subject area. Changes to available information, legislation and schedules are made on an ongoing basis and readers should obtain up to date information. Eco Logical Australia Pty Ltd accepts no liability or responsibility whatsoever for or in respect of any use of or reliance upon this report and its supporting material by any third party. Information provided is not intended to be a substitute for site specific assessment or legal advice in relation to any matter. Unauthorised use of this report in any form is prohibited.

Template 2.8.1

Contents

1. Introduction	1
1.1 Project background.....	1
1.2 Assessment process – Historic Heritage	1
1.3 Assessment process – Aboriginal Heritage	1
2. Assessment process – Historic Heritage.....	3
2.1.1 Local, State and National heritage registers	3
3. Assessment process – Aboriginal Heritage.....	5
3.1 Database searches and known information sources	5
3.1.1 AHIMS search.....	5
3.1.2 Local, State and National heritage registers	6
3.1.3 Previous archaeological investigation.....	9
3.2 Landscape assessment.....	10
3.2.1 Hydrology.....	11
3.3 Predictive model.....	11
4. Conclusions and Recommendations	15
5. References.....	16
Appendix A AHIMS Search Results	17

List of Figures

Figure 1: The Study Area	2
Figure 2: Historic Heritage items within the vicinity of the study area	4
Figure 3: AHIMS registered sites within the vicinity of the study area.....	7
Figure 4: AHIMS registered sites in the study area	8
Figure 5: Soil landscapes and hydrology of the study area.....	14

List of Tables

Table 1: Search Parameters for the AHIMS database search	5
Table 2: Search results for the AHIMS database search	5
Table 3: Frequencies of site types.....	6
Table 4: Bateman subregion located within the study area (source: NSW Department of Planning and Environment).....	10

Table 5: Predictive model.....12

1. Introduction

1.1 Project background

Freedom Development Group, on behalf of Brightlands Living, engaged Eco Logical Australia Pty Ltd (ELA) to undertake a desktop Aboriginal and Historic Heritage Constraints Assessment for the proposed development of 207 Broulee Road (Lot 1 DP1256287) Broulee, NSW (hereafter referred to as ‘the study area’; Figure 1). ELA understands that the proposed works would include changing the zoning of the land from R2 to C4, the construction of a 900 to 950 environmental living housing subdivision and providing enhanced natural landscaping through additional planting.

The aim of this constraints assessment is to provide preliminary advice about any heritage items in the study area or its vicinity and include recommendations for further assessment and approvals under the Heritage Act 1977. ELA will also provide advice about whether recorded Aboriginal objects are present and whether additional Aboriginal objects are likely to be located within study area in order to determine whether any further assessment will be required (see Section 4).

1.2 Assessment process – Historic Heritage

The methodology of the desktop heritage assessment includes:

- Review of relevant background literature and databases, including the Australian Heritage Database, NSW State Heritage Register (SHR) and Eurobodalla LEP 2012.
- Review of aerial photography to determine land use.
- Provide mapping of heritage items and curtilage in the vicinity of the proposed work.
- Provide initial advice about any heritage constraints and any further assessments that may be required before works commence.

1.3 Assessment process – Aboriginal Heritage

The methodology of the desktop Aboriginal heritage assessment includes:

- Undertake a search of the Aboriginal Heritage Information Management System (AHIMS) register maintained by Heritage NSW, Department of Premier and Cabinet (Heritage NSW) to establish if there are any previously recorded Aboriginal objects or places within the study area;
- Undertake a search of the Eurobodalla Local Environmental Plan (LEP) 2012 Schedule 5 (Environmental Heritage), the NSW State Heritage Inventory and the Australian Heritage Database in order to determine if there are any sites of archaeological significance or sensitivity located within the study area;
- Review historic aerial photographs, if available, to determine past land use and any historic disturbances to the study area;
- Undertake a desktop review of relevant previous archaeological assessments to understand the local archaeological context and assist in predicting the likely occurrence of unrecorded archaeological sites or objects, and
- Provide advice about whether further archaeological investigation, including a visual inspection, will be required.



Figure 1: The Study Area

2. Assessment process – Historic Heritage

2.1.1 Local, State and National heritage registers

Searches of the Australian Heritage Database, the State Heritage Inventory (SHI) and the Eurobodalla LEP 2012 utilising the terms “Broulee” were conducted on 15 August 2022 in order to determine if any places of historic significance are located within the study area.

The study area is located within the curtilage of the ‘Site of Mount Oldrey Homestead’, an archaeological site listed on the LEP (item number I46) (Figure 2). Eurobodalla Council were contacted for the inventory sheet for this item, however this was not made available at the time of this assessment.

The site appears to be of heritage significance as the original homestead of Captain William Oldrey, an officer in the Royal Navy and one of the most prominent early settlers in the town of Broulee. William Oldrey arrived in Sydney in 1839 as a serving naval officer, after being given two years of leave to go to New South Wales as a bearer of dispatches. It is presumed that Oldrey retired after his two years of leave had ended in September 1840, and by then he had already begun to acquire land in the relatively new and remote town of Broulee. The census of 1841 recorded that Broulee contained 6 buildings and 46 people, 40 of whom, including convicts, were working for Oldrey (Gibney, 1980; p. 5). By 1843, Oldrey had acquired 4010 acres of land, in four lots of up to 1110 acres, along the southern, western and north-western boundaries of Broulee and had built his home, the Mt Oldrey Estate, along the western slopes of Broulee and on both sides of Broulee Road down to the beach.

The Mount Oldrey Estate was the only large homestead in Broulee and was listed for sale unsuccessfully in 1840, with the advertisement describing the land as *‘consisting of about eleven hundred acres of landwith seventy Town Allotments in section 33, 34, 41, and 42. The Homestead is situate on the crest of Mt Oldrey which forms a splendid amphitheatre....commanding the Township and Harbour of Broulee, Scarborough and the Glorious Pacific. The cottage is sixty feet in length with verandah. It contains five rooms and three skilling rooms, plastered and colored. There is a store house, slabbed and shingled, twenty four feet by eighteen with three rooms – a store, an office and a bedroom. There is also a detached kitchen and servants’ bedroom of the same material, In addition to these there are six men’s huts, a four stalled stable and a saddle room built of bark’* (The Australian: 29 December 1840, cited in Sewell, 2017).

Following a flood in 1841 which devastated the economy and prospects of Broulee as a prominent port town, and the subsequent bankruptcy of Oldrey, his estate was placed under *‘under sequestration in the hands of the Chief Commissioner of Insolvent Estates’* in January 1844 (Gibney, 1980; p. 5).

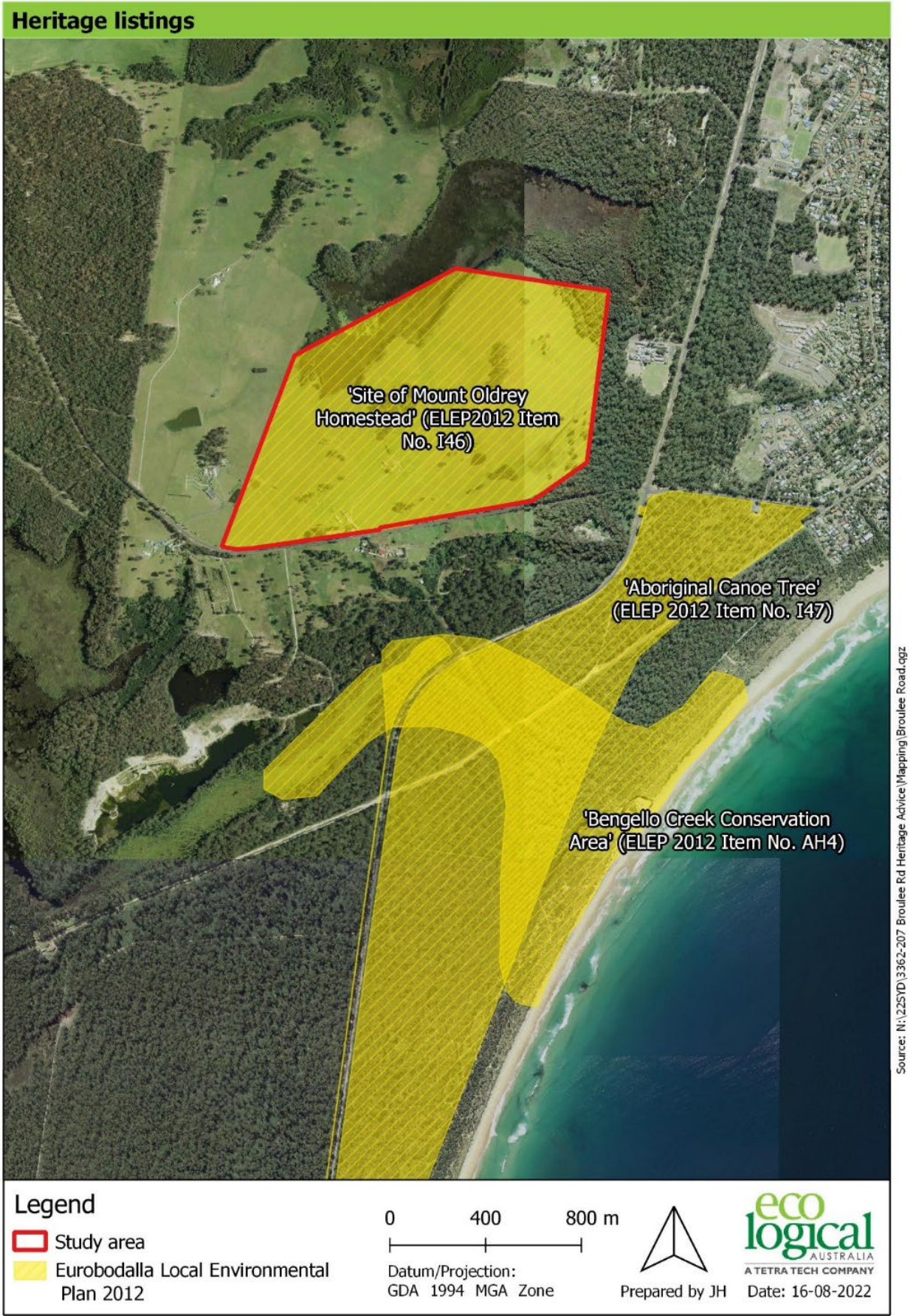


Figure 2: Heritage items within the vicinity of the study area listed on the LEP

3. Assessment process – Aboriginal Heritage

3.1 Database searches and known information sources

3.1.1 AHIMS search

The AHIMS database is maintained by Heritage NSW and regulated under Section 90Q of the *National Parks and Wildlife Act 1974*. The AHIMS database holds information and records regarding the registered Aboriginal archaeological sites (Aboriginal objects, as defined under the Act) and declared Aboriginal places that exist in NSW.

A search of the AHIMS database was conducted on 12 August 2022 to identify if any registered Aboriginal sites were present within, or adjacent to, the study area (**Appendix A**). This represents 4km around the study area.

The AHIMS database search was conducted within the following coordinates:

Table 1: Search Parameters for the AHIMS database search

Search Parameters	
GDA Zone	56
Eastings	238414 - 2464414
Northings	6024704 - 6032704
Buffer	0m

The AHIMS search result showed:

Table 2: Search results for the AHIMS database search

Search Results	
Aboriginal sites recorded	76
Aboriginal places declared	0

AHIMS ID 58-4-1361 has been listed as 'not a site'. Two sites, AHIMS ID 58-4-1313 and AHIMS ID 58-4-1296, have been listed as 'restricted sites'. AHIMS confirmed that these restricted sites are not located within the study area.

One Aboriginal midden site, 'Longvale Site 3' (duplicate site AHIMS ID 58-4-0894/AHIMS ID 58-4-0918) has previously been recorded as being within the study area (Figure 4).

Three sites have also been recorded within the vicinity of the study area:

- AHIMS ID 58-4-0893, an artefact site, is located approximately 90m to the south-east of the study area
- AHIMS ID 58-4-0892 is located approximately 110m to the south-east of the study area
- AHIMS ID 58-4-002 is located approximately 300m to the south-east of the study area

The distribution of recorded Aboriginal sites within the vicinity of the study area is shown in Figure 3 and Figure 4. The frequencies of site types recorded within the AHIMS database search area are listed below. Recorded sites do not represent the number or type of all sites likely to be located in a landscape but are only those that have been surveyed and recorded.

Table 3: Frequencies of site types

Site Features	Number	%
Artefact	32	42.67
Burial	1	1.33
Modified Tree (Carved or Scarred)	4	5.33
Modified Tree (Carved or Scarred); Artefact	5	6.66
Non-Human Bone and Organic Material; Shell	2	2.67
Potential Archaeological Deposit (PAD)	2	2.67
PAD; Artefact	1	1.33
PAD; Shell	2	2.67
Shell	2	2.67
Shell; Artefact	22	29.33
Restricted Site	2	2.67
Total	75	100

3.1.2 Local, State and National heritage registers

Searches of the Australian Heritage Database, the State Heritage Inventory (SHI) and the Eurobodalla LEP 2012 utilising the terms “Broulee” were conducted on 15 August 2022 in order to determine if any places of archaeological significance are located within the study area.

No Aboriginal archaeological sites or heritage items were recorded on these databases within the study area.

There are two Aboriginal heritage items within the vicinity of the study area:

- ‘Aboriginal Canoe Tree’ (item number I47 on the Eurobodalla LEP) is located approximately 300m to the south-east of the study area (Figure 2). The Canoe Tree is a mature eucalyptus species with a large elliptic scar and is believed to be around 200 years old. It is listed as it is ‘*a rare example of an Aboriginal Canoe Tree occurring within the Eurobodalla Shire: the tree and the manner by which it has been protected is representative of an early appreciation of the practices of the area's indigenous inhabitants by descendants of European settlers*’ (State Heritage Inventory, 2022).
- ‘Bengello Creek Conservation Area’ (item number AH4 on the Eurobodalla LEP) is located approximately 300m to the south of the study area (Figure 2). According to the statement of significance, ‘*The heritage significance of Bengello Creek relates to burial, camping, meeting, spiritual, travelling, teaching and resource collection values. The significance of Bengello Creek interconnects with areas of social and cultural heritage values to the north [Broulee] and south [Garlandtown and Moruya]. The Creek itself holds spiritual significance as well as providing foods and natural resources for the families who have lived there. The area continues to be used today*

as teaching and resource collection place and the area continues to be revered for its spiritual qualities' (State Heritage Inventory, 2022).

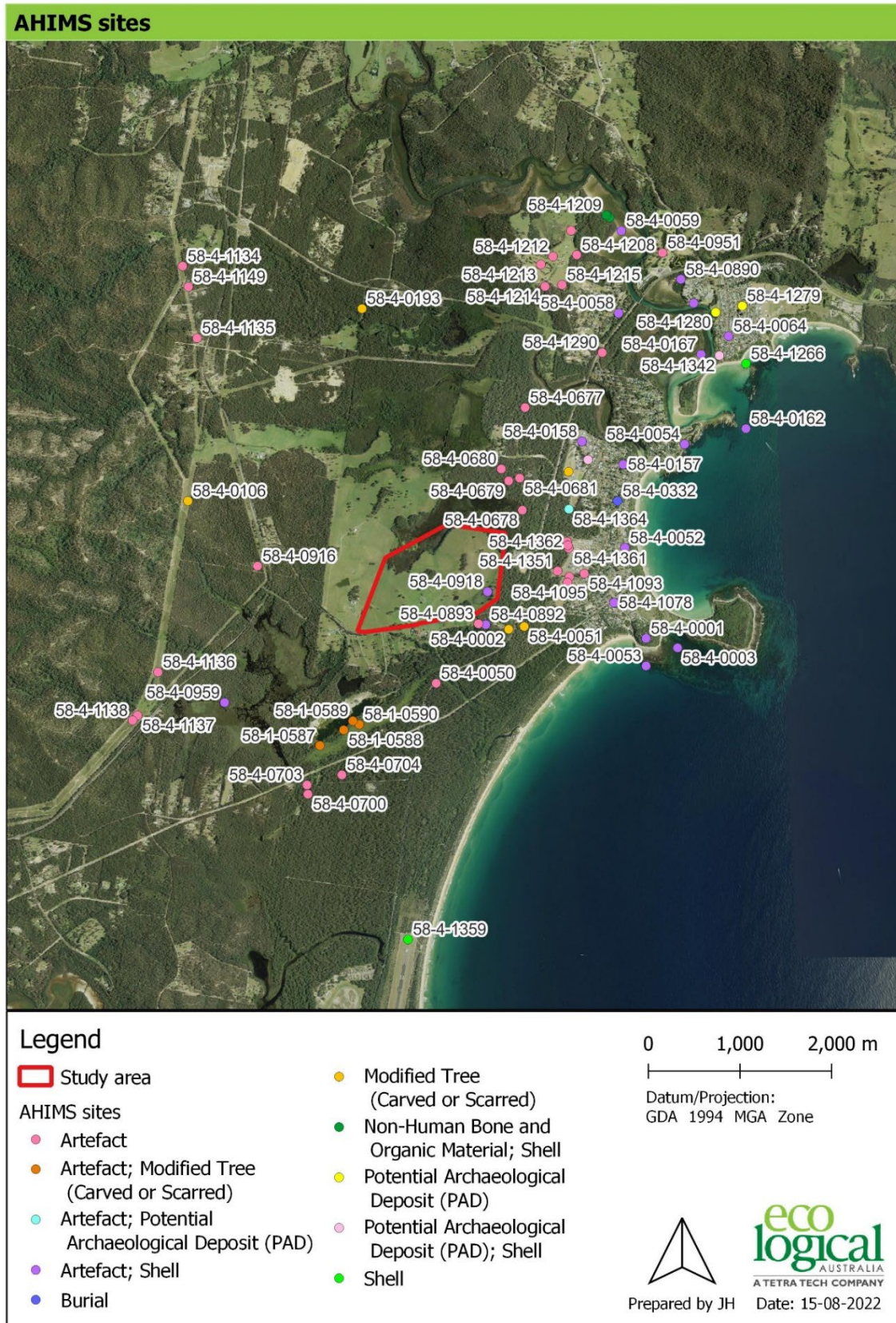


Figure 3: AHIMS registered sites within the vicinity of the study area

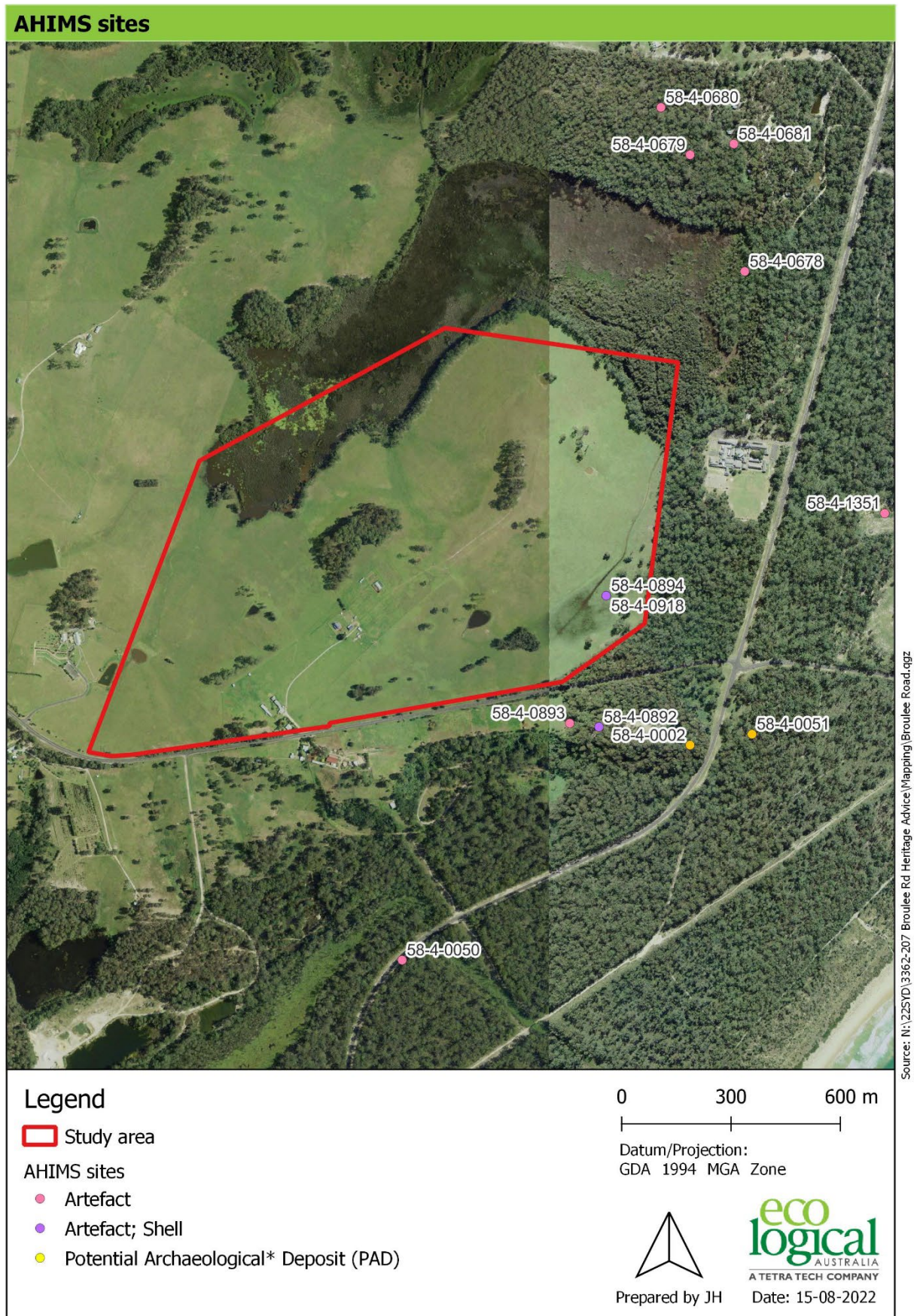


Figure 4: AHIMS registered sites in the study area

3.1.3 Previous archaeological investigation

Lampert's (1971) excavation of the Burrill Lake, South Coast, rock shelter has provided some of the earliest evidence for the occupation of south-eastern coastal New South Wales. Radiocarbon dates derived from wood charcoal present in the lowest occupation layers of the rock shelter yielded dates of $20,820 \pm 810$ and $20,760 \pm 800$ years Before Present (Lampert 1971:9; B.P.). The faunal remains from the site indicate that the local population were subsisting on a mixed coastal-bushland diet: whilst marine shell was present in not inconsiderable quantities, there was a heavy emphasis on the faunal species available in the immediate vicinity of the shelter (Lampert 1971:12). Archaeological investigations of the South Coast have found that the majority of sites have been identified within close proximity to the coastline, with only a small number being recorded in the wetlands and riverine plains set back from the shoreline.

Hughes, P, 2002. *An Archaeological Assessment of 22-24 (Lots 9 and 10) Massey Street, Broulee NSW.* Prepared for Ralph Hammill.

Heritage Consultant Phillip Hughes conducted an archaeological assessment on two adjacent blocks of land, located at 22 and 24, Massey Street Broulee NSW. In relation to the current study area, this assessment was undertaken approximately 2km to the east.

A search of the NPWS Aboriginal sites register found that 24 previously recorded Aboriginal sites were located within the vicinity of their study area. These sites included five modified trees, 10 shell middens, seven stone artefacts and one burial site. Previous investigations within the Broulee Region indicated that Aboriginal sites tended to occur in the form of artefact scatters along the western margin of the beach ridge plain, adjacent to the resource rich wetlands and swamps. Sites commonly occurred on the sand ridges and on the footslopes of hills, with few sites previously recorded along the beach ridge plain. Wider investigations in the Eurobodalla region identified common site types occurring within sandy coastal contexts included shell middens and burials.

A field survey of their study area was undertaken which did not identify any archaeological materials. The study area was found to be situated on the landward side of a sand dune complex, with the base of the dune having been completely modified by extensive cut and fill earthworks. The earthworks had produced a bench on which the back of the existing house rested and where the driveway was located. The only shell seen was attributed to the imported estuarine fill and all identified bone was noted to be sheep bone. Archaeological visibility was good due to the high levels of ground disturbance. This disturbance was largely related to the modification of the sand dune complex, driveway, rabbit scrapes and residence. Overall, the survey found that the likelihood of archaeological material, including shell middens and stone artefacts, was very low. The possibility for burials to occur was also considered to be low, however it was noted that the possibility for burials could not entirely be dismissed.

As a result of this investigation, no further archaeological assessment was recommended. However, the Mogo LALC expressed concerns about burials occurring within the dune system and recommended monitoring for the footing excavations.

Kelleher Nightingale Consulting, 2017. *Batemans Bay Bridge Replacement – Aboriginal Cultural Heritage Assessment.* Prepared for Aurecon on behalf of NSW Roads and Maritime Services.

Kelleher Nightingale Consulting (KNC) was previously engaged by Aurecon, on behalf of NSW Roads and Maritime Services, to undertake an Aboriginal Cultural Heritage Assessment (ACHA) to support an AHIP for the proposed construction of a new bridge on the Princes Highway over the Clyde River in Batemans Bay, NSW. In relation to the current study area, this assessment was undertaken approximately 19km to the north.

A previous archaeological report of the proposed study area found that archaeological sites within the region generally occurred as shell middens, surface artefact scatters and isolated artefacts on relatively elevated landforms along the margins of the Clyde River and its tributaries. The assessment identified that three shell middens and an artefact scatter had previously been recorded within their study area and that a test excavation had been undertaken which confirmed the presence of subsurface archaeological deposits at all four previously recorded sites. An archaeological survey was undertaken which identified one area of PAD, in a suitable landform and in an area that displayed minimal signs of disturbance. A program of test excavation on the area of PAD was recommended, with the assessment determining that the majority of the study area contained no archaeological potential for subsurface archaeological deposits due to disturbance related to modern land practices, bulk earthworks and natural erosional processes.

A test excavation of the area of PAD was undertaken which identified the presence of artefacts within a disturbed fill overlying natural sands. The natural sands did not contain any artefacts. The test excavation identified a total of two artefacts from one of the fifteen test pits, comprising of a flake of medium grained siliceous material and a quartz bipolar core. The artefacts were recovered from the top 15cm of a fill deposit, which also contained inclusions of granite and small bivalve shell. No in situ deposits were identified and a low archaeological significance was assigned to the site.

As a result of this assessment, an AHIP was to be sought for the proposed impacts to the recorded Aboriginal sites within their study area, and a salvage was recommended for the two previously recorded sites presenting a moderate archaeological potential.

3.2 Landscape assessment

The study area is situated within the Bateman subregion of the South Eastern Corner bioregion of NSW and comprises of Kraznozems, Yellow Earths and Solonchaks (Figure 5). A summary of the geology, landforms, soils and vegetation that is typical within this subregion is provided in Table 4 below.

Table 4: Bateman subregion located within the study area (source: NSW Department of Planning and Environment)

Bateman	
Geology	Tightly folded fine grained Ordovician metamorphic rocks with several intrusions of granite. Western margin is a tight synclinal fold in Devonian sandstone and siltstone. Small areas of Tertiary basalt and quartz sands behind the coastal headlands. Quaternary alluvium on main valley floors and in the estuaries
Characteristic Landforms	Steep hills below the Great escarpment orientated north-south and controlled by rock structure. Lines of hills become lower toward the coast with a slight up turn along the coastal margin. Coastal barrier systems are small and estuarine fills limited.
Typical Soils	Mostly texture contrast soils. Red clay subsoils with thin topsoil on metamorphic rocks, deeper coarser grained profiles on granite. Red brown structured loams on basalt and deep siliceous sands with some podsol development on Tertiary sands and coastal dunes.

Bateman	
Vegetation	Hakea, melaleuca, coast rosemary and dwarfed red bloodwood and spotted gum forests to 300m. Yellow stringybark, grey ironbark and woollybutt to 550m. Brown barrel, black ash, Sydney peppermint, large-fruited red mahogany, Sydney blue gum and monkey gum to 900m, then snow gum.

3.2.1 Hydrology

Ephemeral drainage lines run through the east and west of the study area. Tributaries associated with Bengello Creek run to the south of the study area, with tributaries associated with Candlagan Creek running to the north and north-west (Figure 5). These creeks feed into the two coastal beaches located within the vicinity of the study area; Broulee Beach, located approximately 1.5km to the south-east of the study area, and Bengello Beach, located approximately 1.2km to the south.

3.3 Predictive model

The traditional owners of the wider Eurobodalla region are members of the Yuin Nation, whose custodianship of the land can be understood as a culturally engrained care and concern for the natural world. The regions surrounding the study area would have provided rich and diverse natural resources for these Aboriginal people, and would have been utilised for fishing, hunting and as a source of freshwater (Donaldson, 2007).

The Bugelli-Manji clan occupied the area in and around Moruya and Broulee. They lived in shelters organised by family units, though the concept of 'family' was flexible. Anthropologist A.W. Howitt noted how these family units were controlled by a headman (Gommerera) who was wise and had magical powers and spiritual connections (Moruya District Historical Society, 2021). According to Howitt, these headmen presided over justice:

"An instance is known to me of an expiatory meeting in the Yuin tribe in consequence of a Moruya man being killed by a man from Bodalla, but I am not aware whether by violence or by magic. The Bodalla Gommerera sent a Jirri (messenger) to the Bodalla man, telling him he must come to a certain place and stand out. Meanwhile the men of Moruya were preparing their spears and heating their boomerangs in hot ashes to make them tough. At the time fixed, the man appeared, armed with two shields. As he was charged with killing someone, he had to stand out alone; but if he had been only charged with injuring him, or with having used Joias, that is, magical charm, without actually killing the person, he would have been allowed to have a friend to help him. His friends with their Gommerera stood at one side, a little out of spear range, while the Moruya men and their Gommerera were at one side of the friends of the dead man" (Howitt, 1883 cited in Moruya District Historical Society).

Based on the material evidence and range of archaeological sites across the region, it is clear that Aboriginal people have been utilising the land and resources across the South Coast of NSW for thousands of years. The predictive model outlined in Table 5 below has been developed for the study area based on the AHIMS search results, landscape assessment and regional and local Aboriginal archaeological context outlined above.

Table 5: Predictive model

Site Type	Description	Likelihood to occur
Open camp sites/stone artefact scatters/isolated finds	<p>Open camp sites represent past Aboriginal subsistence and stone knapping activities and include archaeological remains such as stone artefacts and hearths. This site type usually appears as surface scatters of stone artefacts in areas where vegetation is limited and ground surface visibility increases.</p> <p>Isolated finds may represent a single item discard event or be the result of limited stone knapping activity. The presence of such isolated artefacts may indicate the presence of a more extensive, in situ buried archaeological deposit, or a larger deposit obscured by low ground visibility.</p>	Moderate to high - there are registered artefact sites in the study area and in the vicinity indicating this is likely to occur.
Potential Archaeological Deposit	Potential Archaeological Deposits (or PADs) are areas where there is no surface expression of stone artefacts, but due to a landscape feature there is a strong likelihood that the area will contain buried deposits of stone artefacts.	Moderate - there are registered PADs within proximity to the study area indicating this could occur.
Shell Midden Deposits	Are commonly made up of the molluscs fragments and remains of shellfish. A midden may also contain fish and animal bones, stone tools, or charcoal. They can vary in size and depth. Middens are sometimes associated with burials. Middens can be found on headlands, sandy beaches and dunes, around estuaries, swamps and tidal stretches of creeks and rivers, and along the banks of inland rivers, creeks and lands. Middens may also be found in the open or in rock shelters. Middens can indicate that a place was, and may continue to be, a key meeting place of significance. Middens can also provide information about the environment that existed when Aboriginal people collected the shellfish, such as changes in species, and tools or raw materials that were used. Middens which contain burials are particularly significant.	Moderate to high – There are known midden sites within the study area and wider region, indicating this is likely to occur.
Scarred or carved trees	Tree bark was utilised by Aboriginal people for various purposes, including the construction of shelters (huts), canoes, paddles, shields, baskets and bowls, fishing lines, cloaks, torches and bedding, as well as being beaten into fibre for string bags or ornaments (sources cited in Attenbrow 2002: 113). Trees may also have been scarred in order to gain access to food resources (e.g. cutting toe-holds so as to climb the tree and catch possums or birds), or to mark locations such as tribal territories. Such scars, when they occur, are typically described as scarred trees.	Low – scarred trees are registered on the AHIMS database as being within the vicinity of the study area, however the study area appears to have largely been cleared of vegetation, indicating this is unlikely to occur.
Axe grinding grooves	Grinding grooves are the physical evidence of tool making or food processing activities undertaken by Aboriginal people. The manual rubbing of stones against other stones creates grooves in the rock; these are usually found on flat areas of abrasive rock such as sandstone.	Low – no grinding grooves are registered on the AHIMS database as being located within the vicinity of the study area and no sandstone outcrops are located in the study area
Bora/ceremonial	Aboriginal ceremonial sites are locations that have spiritual or ceremonial values to Aboriginal people. Aboriginal ceremonial sites may comprise natural landforms and, in some cases, will also have archaeological material. Bora grounds are a ceremonial site type, usually consisting of a cleared area around one or more raised earth circles, and often comprised of two circles of different sizes, connected by a pathway, and accompanied	Low - there is no evidence to suggest this site type occurs within the study area.

Site Type	Description	Likelihood to occur
	by ground drawings or mouldings of people, animals or deities, and geometrically carved designs on the surrounding trees.	
Burial	Mortuary practices often took place in proximity to camp sites, as most people tended to die in or close to camp and it is difficult to move a body over a long distance. Soft, sandy soils on or close to rivers and creeks allowed for easier removal of earth for burial. Similarly, rock shelters or middens also provided accessible burial places. Burial sites may be marked by stone cairns, modified trees, or a natural landmark. They may also be identified through historic records or oral histories.	Low - there is no evidence to suggest this site type occurs within the study area.
Contact/historical sites	Artefacts located at such sites may involve the use of introduced materials such as glass or ceramics by Aboriginal people or be sites of Aboriginal occupation in the historical period.	Low – there is no evidence to suggest this site type occurs within the study area.

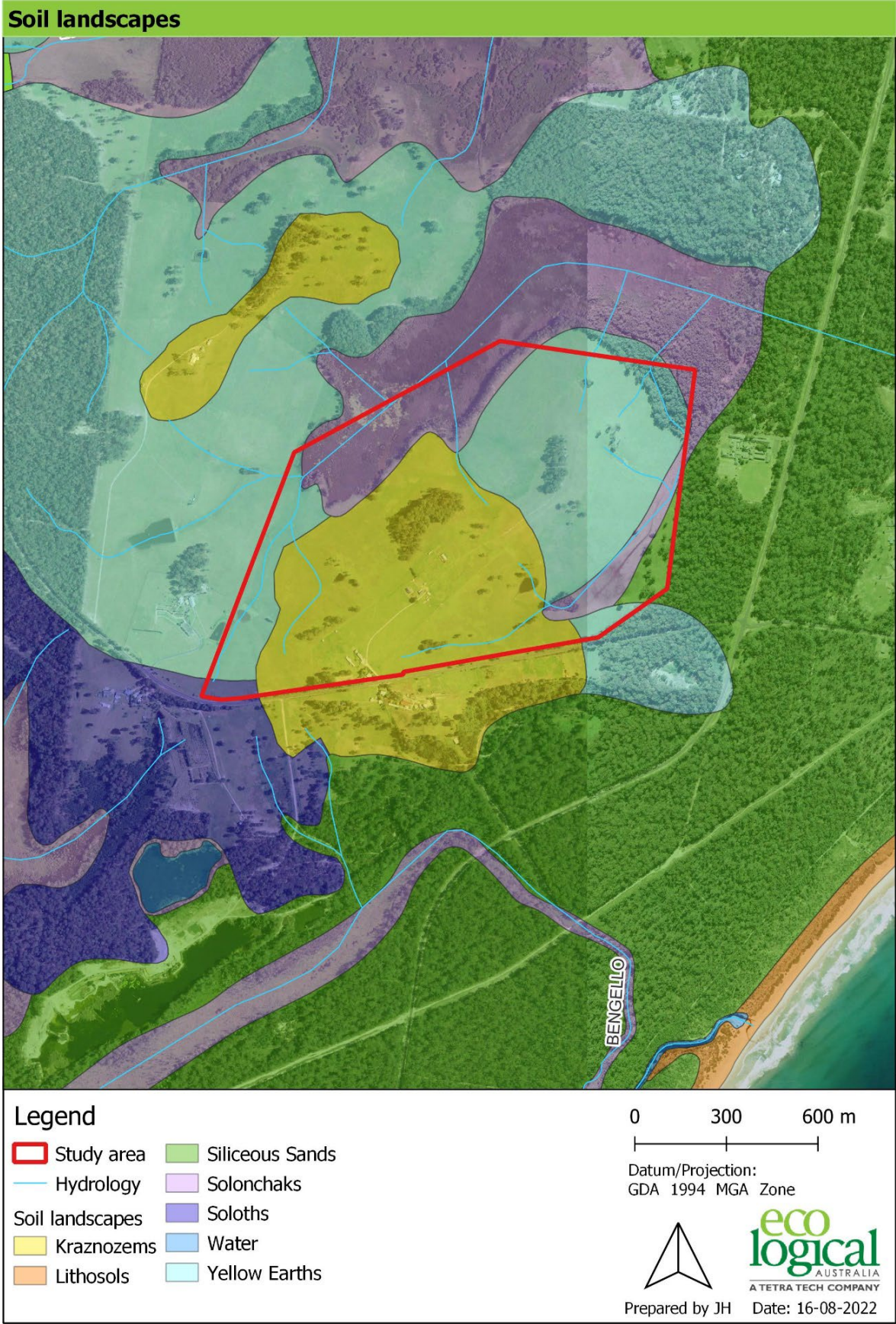


Figure 5: Soil landscapes and hydrology of the study area

4. Conclusions and Recommendations

4.1 Conclusions

HISTORICAL HERITAGE

The study area is located within the curtilage of the heritage listed 'Mount Oldrey Homestead', an archaeological site listed on the Eurobodalla Local Environmental Plan (LEP) 2012 (Item No. I46). Under Section 5.10 of the Eurobodalla LEP, the submission of a Statement of Heritage Impact (SoHI) is required for works to heritage listed items, items in conservation areas, and items in the vicinity of heritage items. As such, a SoHI must be undertaken prior to any future development within the study area. The SoHI will assess the impacts to any historical heritage items on the property and assess the potential for a historical archaeological resource. If impacts to historical archaeology cannot be avoided further assessments and permit application under section 140 of the Heritage Act will be required. This will include preparation of a full archaeological assessment and an archaeological research design as well as salvage excavation.

ABORIGINAL HERITAGE

The desktop constraints assessment has identified one Aboriginal midden site (AHIMS ID 58-4-0894/AHIMS ID 58-4-0918) within the study area. Several sites have also been recorded within the close vicinity of the study area, indicating that there is a moderate potential for further archaeological objects to be present within the study area. If impacts to the known archaeological site cannot be avoided further assessments and permit application under Section 90 of the National Parks and Wildlife Act will be required. This will include preparation of an Aboriginal Cultural Heritage Assessment in consultation with Aboriginal stakeholders and test excavation.

4.2 Recommendations

While a visual inspection has not been undertaken, the study area has potential for both historical and Aboriginal archaeological sites to be present which will require further investigation prior to any future development.

5. References

Donaldson, 2007. *Eurobodalla Aboriginal Heritage Study Stage Three – Understanding and Managing Aboriginal Cultural Heritage*. Prepared for The Eurobodalla Aboriginal Heritage Steering Committee and Eurobodalla Shire Council.

Eurobodalla Local Environmental Plan 2012, accessed 15 August 2022
<https://legislation.nsw.gov.au/view/html/inforce/current/epi-2012-0333#sch.5>

Gibney, H, 1980. *The History Of Moruya – White Settlement*. Accessed 24 August 2022
<https://mdhs.org.au/pdfs/MORUYA%20A%20short%20history.pdf>

Kelleher Nightingale Consulting, 2017. *Batemans Bay Bridge Replacement – Aboriginal Cultural Heritage Assessment*. Prepared for Aurecon on behalf of NSW Roads and Maritime Services.

Hughes, P, 2002. *An Archaeological Assessment of 22-24 (Lots 9 and 10) Massey Street, Broulee NSW*. Prepared for Ralph Hammill, Architect.

Lampert, R. J. 1971. *Burrill Lake and Currarong*. Canberra, Australia: Department of Prehistory, Research School of Pacific and Asian Studies, Australian National University.


Moruya District Historical Society, accessed 18 August 2022, <https://mdhs.org.au/history.html>

NSW Department of Planning and Environment, South East Corner Bioregion, accessed 15 August 2022, <https://www.environment.nsw.gov.au/-/media/OEH/Corporate-Site/Documents/Animals-and-plants/Bioregions/bioregions-south-east-corner.pdf>

NSW State Heritage Inventory, accessed 15 August 2022,
https://www.hms.heritage.nsw.gov.au/App/Item/SearchHeritageItems?_ga=2.136933432.961483771.1660520644-7074715.1631684538

Sewell, John. September 2017. *Journal of the Moruya and District Historical Society – Captain William Oldrey RN*. Accessed 24 August 2022 https://mdhs.org.au/pdfs/People/Captain_William_Oldrey.pdf

Appendix A AHIMS Search Results



AHIMS Web Services (AWS)

Extensive search - Site list report

Your Ref/PO Number : 22SYD3362


Client Service ID : 707757

SiteID	SiteName	Datum	Zone	Easting	Northing	Context	Site Status **	SiteFeatures	SiteTypes	Reports
58-4-0892	Longvale Site 2	AGD	56	243450	6028150	Open site	Valid	Shell : -, Artefact : -	Midden	
	Contact	Recorders	Permits							
	Longvale site 1	AGD	56	243370	6028160	Open site	Valid	Artefact : -	Open Camp Site	98117
58-4-0893	Longvale site 1	AGD	56	243370	6028160	Open site	Valid	Artefact : -	Open Camp Site	98117
	Contact	Recorders	Permits							
	Longvale Site 3	AGD	56	243470	6028510	Open site	Valid	Shell : -, Artefact : -	Midden	98117
58-4-0894	Longvale Site 3	AGD	56	243470	6028510	Open site	Valid	Shell : -, Artefact : -	Midden	98117
	Contact	Recorders	Permits							
	Moorings 1	AGD	56	245580	6031920	Open site	Valid	Shell : -, Artefact : -	Midden	
58-4-0890	Moorings 1	AGD	56	245580	6031920	Open site	Valid	Shell : -, Artefact : -	Midden	
	Contact	Recorders	Permits							
	1524,1548	AGD	56	245200	6028000	Open site	Valid	Shell : -, Artefact : -	Midden	98117
58-4-0901	Broolee (Island);	AGD	56	245200	6028000	Open site	Valid	Shell : -, Artefact : -	Midden	98117
	Contact	Recorders	Permits							
	Broolee (Island);	AGD	56	243700	6028100	Open site	Valid	Modified Tree (Carved or Scarred) : -	Scarred Tree	98117
58-4-0902	Broolee (Island);	AGD	56	243700	6028100	Open site	Valid	Modified Tree (Carved or Scarred) : -	Scarred Tree	98117
	Contact	Recorders	Permits							
	Broolee Point 1 (Island);	AGD	56	245544	6027897	Open site	Valid	Shell : -, Artefact : -	Midden	98117
58-4-0903	Broolee Point 1 (Island);	AGD	56	245544	6027897	Open site	Valid	Shell : -, Artefact : -	Midden	98117
	Contact	Recorders	Permits							
	Broolee Point 2 (Island);	AGD	56	245544	6027897	Open site	Valid	Shell : -, Artefact : -	Midden	98117
58-4-0904	Broolee Point 2 (Island);	AGD	56	245544	6027897	Open site	Valid	Shell : -, Artefact : -	Midden	98117
	Contact	Recorders	Permits							
	Broolee; Smith St	AGD	56	244890	6029500	Open site	Valid	Burial : -	Burial/s	98117
58-1-0332	Broolee; Smith St	AGD	56	244890	6029500	Open site	Valid	Burial : -	Burial/s	98117
	Contact	Recorders	Permits							
	Ilkawang 1a	AGD	56	241640	6026830	Open site	Valid	Modified Tree (Carved or Scarred) : -, Artefact : -	Open Camp Site, Scarred Tree	3442
58-1-0587	Ilkawang 1a	AGD	56	241640	6026830	Open site	Valid	Modified Tree (Carved or Scarred) : -, Artefact : -	Open Camp Site, Scarred Tree	3442
	Contact	Recorders	Permits							
	Ilkawang 1b	AGD	56	241900	6027000	Open site	Valid	Modified Tree (Carved or Scarred) : -, Artefact : -	Open Camp Site, Scarred Tree	3442
58-1-0588	Ilkawang 1b	AGD	56	241900	6027000	Open site	Valid	Modified Tree (Carved or Scarred) : -, Artefact : -	Open Camp Site, Scarred Tree	3442
	Contact	Recorders	Permits							
	Ilkawang 1d	AGD	56	242070	6027060	Open site	Valid	Modified Tree (Carved or Scarred) : -, Artefact : -	Open Camp Site, Scarred Tree	3442
58-1-0590	Ilkawang 1d	AGD	56	242070	6027060	Open site	Valid	Modified Tree (Carved or Scarred) : -, Artefact : -	Open Camp Site, Scarred Tree	3442
	Contact	Recorders	Permits							
	Mossy Point; Candalagan Creek 1;	AGD	56	244950	6029900	Open site	Valid	Shell : -, Artefact : -	Midden	815,98117
58-4-0157	Mossy Point; Candalagan Creek 1;	AGD	56	244950	6029900	Open site	Valid	Shell : -, Artefact : -	Midden	815,98117
	Contact	Recorders	Permits							
	Mossy Point; Candalagan Creek 2;	AGD	56	244500	6030150	Open site	Valid	Shell : -, Artefact : -	Midden	815
58-4-0158	Mossy Point; Candalagan Creek 2;	AGD	56	244500	6030150	Open site	Valid	Shell : -, Artefact : -	Midden	815
	Contact	Recorders	Permits							
	Tomakin; Melville Pt;	AGD	56	246290	6030290	Open site	Valid	Shell : -, Artefact : -	Midden	
58-4-0162	Tomakin; Melville Pt;	AGD	56	246290	6030290	Open site	Valid	Shell : -, Artefact : -	Midden	
	Contact	Recorders	Permits							
	Miss; Marjorie Sullivan	AGD	56	246290	6030290	Open site	Valid	Shell : -, Artefact : -	Midden	

Report generated by AHIMS Web Service on 12/08/2022 for Kate Storan for the following area at Datum :GDA, Zone : 56, Eastings : 238414.0 - 246414.0, Northings : 6024704.0 - 6032704.0 with a Buffer of 0 meters. Number of Aboriginal sites and Aboriginal objects found is 76

This information is not guaranteed to be free from error omission. Heritage NSW and its employees disclaim liability for any act done or omission made on the information and consequences of such acts or omission.

Page 1 of 6



AHIMS Web Services (AWS)

Extensive search - Site list report

Your Ref/PO Number : 22SYD3362

Client Service ID : 707757

SiteID	SiteName	Datum	Zone	Easting	Northing	Context	Site Status **	SiteFeatures	SiteTypes	Reports
58-4-0167	Sumpatch;Tomago River; (Tomakin/Mossy Pt 18/181)	AGD	56	245800	6031100	Open site	Valid	Shell : -, Artefact : -	Midden	
	Contact	Recorders	Permits							
58-4-0064	Tomakin 18/183b;	AGD	56	246100	6031300	Open site	Valid	Shell : -, Artefact : -	Midden	
	Contact	Recorders	Permits							
58-5-0001	Broolee_ (Island);	AGD	56	245200	6028000	Open site	Valid	Shell : -, Artefact : -	Midden	98117
	Contact	Recorders	Permits							
58-4-0106	Longvale Swamp;	AGD	56	240200	6029500	Open site	Valid	Modified Tree (Carved or Scarred) : -	Scarred Tree	
	Contact	Recorders	Permits							
58-4-0005	Broolee Point 3 (Island);	AGD	56	245544	6027897	Open site	Valid	Shell : -, Artefact : -	Midden	98117
	Contact	Recorders	Permits							
58-4-0193	Bimbimbie;	AGD	56	242100	6031600	Open site	Valid	Modified Tree (Carved or Scarred) : -	Scarred Tree	
	Contact	Recorders	Permits							
58-4-0050	Broolee 18/212;	AGD	56	242910	6027510	Open site	Valid	Artefact : -	Open Camp Site	451,98117
	Contact	Recorders	Permits							
58-4-0051	Broolee 18/201;	AGD	56	243870	6028130	Open site	Valid	Modified Tree (Carved or Scarred) : -	Scarred Tree	98117
	Contact	Recorders	Permits							
58-4-0052	Broolee 18/214;	AGD	56	244970	6028990	Open site	Valid	Shell : -, Artefact : -	Midden	98117
	Contact	Recorders	Permits							
58-4-0053	Longvale Swamp 18/193b;	AGD	56	245200	6027700	Open site	Valid	Shell : -, Artefact : -	Midden	98117
	Contact	Recorders	Permits							
58-4-0054	Mossy Point 18/193a;	AGD	56	245620	6030120	Open site	Valid	Shell : -, Artefact : -	Midden	
	Contact	Recorders	Permits							
58-4-0058	Tomakin 18/240;	AGD	56	244900	6031530	Open site	Valid	Shell : -, Artefact : -	Midden	103580
	Contact	Recorders	Permits							
58-4-0059	Tomakin 18/101c;	AGD	56	244930	6032450	Open site	Valid	Shell : -, Artefact : -	Midden	3996
	Contact	Recorders	Permits							
58-4-0140	Tomakin 18/180;	GDA	56	245719	6031639	Open site	Valid	Shell : -, Artefact : -	Midden	
	Contact	Recorders	Permits							
58-4-0700	Waldrons Swamp 3;	AGD	56	241510	6026300	Open site	Valid	Artefact : -	Isolated Find	
	Contact	Recorders	Permits							
58-4-0703	Waldrons Swamp 2;	AGD	56	241500	6026400	Open site	Valid	Artefact : -	Open Camp Site	
	Contact	Recorders	Permits							

Report generated by AHIMS Web Service on 12/08/2022 for Kate Storan for the following area at Datum :GDA, Zone : 56, Eastings : 238414.0 - 246414.0, Northings : 6024704.0 - 6032704.0 with a Buffer of 0 meters. Number of Aboriginal sites and Aboriginal objects found is 76

This information is not guaranteed to be free from error omission. Heritage NSW and its employees disclaim liability for any act done or omission made on the information and consequences of such acts or omission.

Page 2 of 6



AHIMS Web Services (AWS)

Extensive search - Site list report

Your Ref/PO Number : 22SYD3362
Client Service ID : 707757

SiteID	SiteName	Datum	Zone	Easting	Northing	Context	Site Status **	SiteFeatures	SiteTypes	Reports
58-4-0704	Waldrons Swamp 1;	AGD	56	241880	6028510	Open site	Valid	Artefact :-	Isolated Find	
	Contact	Recorders		Doctor Julie Dibden				Permits		
58-4-0677	Broulee 1	AGD	56	243880	6030520	Open site	Valid	Artefact :-	Open Camp Site	98608
	Contact	Recorders		Mr. Peter Kuskie				Permits		
58-4-0678	Broulee 2	AGD	56	243850	6029400	Open site	Valid	Artefact :-	Open Camp Site	98117,98608
	Contact	Recorders		Mr. Peter Kuskie				Permits		
58-4-0679	Broulee 4	AGD	56	243700	6029720	Open site	Valid	Artefact :-	Isolated Find	98117,98608
	Contact	Recorders		Mr. Peter Kuskie				Permits		
58-4-0680	Broulee 3	AGD	56	243620	6029850	Open site	Valid	Artefact :-	Isolated Find	98117,98608
	Contact	Recorders		Mr. Peter Kuskie				Permits		
58-4-0681	Broulee 5	AGD	56	243820	6029750	Open site	Valid	Artefact :-	Isolated Find	98117,98608
	Contact	Recorders		Mr. Peter Kuskie				Permits		
58-4-0916	MM1	AGD	56	240960	6028790	Open site	Valid	Artefact :-		
	Contact	Recorders		Navin Officer Heritage Consultants Pty Ltd				Permits		
58-4-0918	Longvale Site 3	AGD	56	243470	6028510	Open site	Valid	Artefact :-, Shell :-		98117
	Contact	Recorders		Heritage Consulting Australia				Permits		
58-4-0951	Moorings/1	AGD	56	245380	6032210	Open site	Valid	Artefact :-		
	Contact	Recorders		Philip Boot				Permits		
58-4-0921	Candlagan Creek Scarred Tree	AGD	56	241354	6029820	Open site	Valid	Modified Tree (Carved or Scarred) :-		98117
	Contact	Recorders		Philip Boot, Danielle Towers				Permits		
58-4-0922	Candlagan Creek Midden	AGD	56	241566	6029950	Open site	Valid	Potential Archaeological Deposit (PAD) :-, Shell :-		98814,99365
	Contact	Recorders		Philip Boot, Danielle Towers				Permits	1751,1752,1821,2236,2842,2918	
58-4-0959	MS3	AGD	56	240600	6027300	Open site	Valid	Shell :- 6, Artefact :- 15		96574
	Contact	Recorders		Phil Hughes				Permits	1513,1510,1652,1653	
58-4-1093	Broulee Beach Estate - BB E 4	AGD	56	244525	6028707	Open site	Valid	Artefact :-		99524,99702
	Contact	Recorders		Navin Officer Heritage Consultants Pty Ltd				Permits	2253,2254,2791	
58-4-1094	Broulee Beach Estate - BB E 1	AGD	56	244363	6028672	Open site	Valid	Artefact :-		99524,99702
	Contact	Recorders		Navin Officer Heritage Consultants Pty Ltd				Permits	2253,2254,2791	
58-4-1095	Broulee Beach Estate - BBE2	AGD	56	241342	6028610	Open site	Valid	Artefact :-		99524,99702
	Contact	Recorders		Navin Officer Heritage Consultants Pty Ltd				Permits	2253,2254,2791	
58-4-1096	Broulee Beach Estate - BBE3	AGD	56	244293	6028522	Open site	Valid	Artefact :-		99524,99702
	Contact	Recorders		Navin Officer Heritage Consultants Pty Ltd				Permits	2253,2254,2791	

Report generated by AHIMS Web Service on 12/08/2022 for Kate Storan for the following area at Datum : GDA, Zone : 56, Eastings : 238414.0 - 246414.0, Northings : 6024704.0 - 6032704.0 with a Buffer of 0 meters. Number of Aboriginal sites and Aboriginal objects found is 76

This information is not guaranteed to be free from error omission. Heritage NSW and its employees disclaim liability for any act done or omission made on the information and consequences of such acts or omission.

Page 3 of 6



AHIMS Web Services (AWS)

Extensive search - Site list report

Your Ref/PO Number : 22SYD3362
Client Service ID : 707757

SiteID	SiteName	Datum	Zone	Easting	Northing	Context	Site Status **	SiteFeatures	SiteTypes	Reports
58-4-1078	GSB1 (44 Grant St, Broulee)	GDA	56	244850	6028390	Open site	Valid	Shell :-, Artefact :-		
	Contact	Recorders		Professor Jim Allen				Permits	1967	
58-4-1134	MRDC Site 4	AGD	56	240142	6032064	Open site	Valid	Artefact :- 1		99505
	Contact	Recorders		Doctor Julie Dibden				Permits		
58-4-1135	MRDC Site 6	AGD	56	240300	6031278	Open site	Valid	Artefact :- 6		99505
	Contact	Recorders		Doctor Julie Dibden				Permits		
58-4-1136	MRDC Site 7	AGD	56	239873	6027632	Open site	Valid	Artefact :- 1		99505
	Contact	Recorders		Doctor Julie Dibden				Permits		
58-4-1137	MRDC Site 8	AGD	56	239650	6027160	Open site	Valid	Artefact :- 10		99505
	Contact	Recorders		Doctor Julie Dibden				Permits		
58-4-1138	MRDC Site 9	AGD	56	239596	6027105	Open site	Valid	Artefact :- 1		99505
	Contact	Recorders		Doctor Julie Dibden				Permits		
58-4-1149	MRDC Site 5	AGD	56	240205	6031838	Open site	Valid	Artefact :- 1		
	Contact	Recorders		Doctor Julie Dibden				Permits		
58-4-1207	Oaks Ranch Site 7	GDA	56	244801	6032594	Open site	Valid	Non-Human Bone and Organic Material :- 4, Shell :-		
	Contact	Recorders		Doctor Julie Dibden, NSW Archaeology Pty Ltd, NSW Archaeology Pty Ltd				Permits		
58-4-1208	Oaks Ranch SU14	GDA	56	244444	6032186	Open site	Valid	Artefact :- 18		
	Contact	Recorders		Doctor Julie Dibden, NSW Archaeology Pty Ltd, NSW Archaeology Pty Ltd				Permits		
58-4-1209	Oaks Ranch Site 6	GDA	56	244766	6032622	Open site	Valid	Non-Human Bone and Organic Material :-, Shell :-		
	Contact	Recorders		Doctor Julie Dibden, NSW Archaeology Pty Ltd, NSW Archaeology Pty Ltd				Permits		
58-4-1212	Oaks Ranch SU16	GDA	56	244183	6032169	Open site	Valid	Artefact :- 2		
	Contact	Recorders		Doctor Julie Dibden, NSW Archaeology Pty Ltd, NSW Archaeology Pty Ltd				Permits		
58-4-1213	Oaks Ranch SU5	GDA	56	244052	6032082	Open site	Valid	Artefact :- 1		
	Contact	Recorders		Doctor Julie Dibden, NSW Archaeology Pty Ltd, NSW Archaeology Pty Ltd				Permits		
58-4-1214	Oaks Ranch SU3	GDA	56	244097	6031842	Open site	Valid	Artefact :- 5		
	Contact	Recorders		Doctor Julie Dibden, NSW Archaeology Pty Ltd, NSW Archaeology Pty Ltd				Permits		
58-4-1215	Oaks Ranch SU17	GDA	56	244283	6031860	Open site	Valid	Artefact :- 4		
	Contact	Recorders		Doctor Julie Dibden, NSW Archaeology Pty Ltd, NSW Archaeology Pty Ltd				Permits		
58-1-0589	Illawong 1c	AGD	56	242000	6027100	Open site	Valid	Artefact :-, Modified Tree (Carved or Scarred) :-	Open Camp Site, Scarred Tree	3442
	Contact	Recorders		Mr. John Appleton				Permits		
58-4-1266	Tonakin/Mossy Pt 18/182B	AGD	56	246290	6031000	Open site	Valid	Shell :-		
	Contact	Recorders		Miss. Marjorie Sullivan				Permits		

Report generated by AHIMS Web Service on 12/08/2022 for Kate Storan for the following area at Datum : GDA, Zone : 56, Eastings : 238414.0 - 246414.0, Northings : 6024704.0 - 6032704.0 with a Buffer of 0 meters. Number of Aboriginal sites and Aboriginal objects found is 76

This information is not guaranteed to be free from error omission. Heritage NSW and its employees disclaim liability for any act done or omission made on the information and consequences of such acts or omission.

Page 4 of 6



AHIMS Web Services (AWS)

Extensive search - Site list report

Your Ref/PO Number : 22SYD3362
Client Service ID : 707757

SiteID	SiteName	Datum	Zone	Easting	Northing	Context	Site Status **	SiteFeatures	SiteTypes	Reports
58-4-1279	Red Hill Parade	GDA	56	246250	6031630	Open site	Valid	Potential Archaeological Deposit (PAD) :-		
	Contact			Recorders	Navin Officer Heritage Consultants Pty Ltd			Permits		
58-4-1280	Yarralumla Crescent/Ainslie Parade Intersection	GDA	56	245960	6031560	Open site	Valid	Potential Archaeological Deposit (PAD) :-		
	Contact			Recorders	Navin Officer Heritage Consultants Pty Ltd			Permits		
58-4-1290	Mossy Point SU1/L1	GDA	56	244721	6031120	Open site	Valid	Artefact :-		
	Contact			Recorders	Doctor Rebecca Parkes			Permits	3136	
58-4-1313	Restriction applied. Please contact ahims@environment.nsw.gov.au.					Open site	Valid			
	Contact			Recorders	Mr. Graham Moore			Permits		
58-4-1296	Restriction applied. Please contact ahims@environment.nsw.gov.au.					Open site	Valid			
	Contact			Recorders	Mr. Graham Moore			Permits		
58-4-1342	Tomakin Boat Ramp PAD	GDA	56	246000	6031088	Open site	Valid	Potential Archaeological Deposit (PAD) :- Shell :-		103357,103358
	Contact			Recorders	Doctor Julie Dibden			Permits	3813,3940,3946	
58-4-1359	Moruya Airport 5	GDA	56	242602	6024714	Open site	Valid	Shell :-		
	Contact			Recorders	Onsite Cultural Heritage Management - Narooma, Mr. Gerard Niemoller			Permits		
58-4-1364	Broulee SPS PAD	GDA	56	244358	6029411	Open site	Valid	Potential Archaeological Deposit (PAD) :- Artefact :-		104049
	Contact			Recorders	Doctor Julie Dibden, Doctor Julie Dibden, NSW Archaeology Pty Ltd, NSW Archaeology Pty Ltd			Permits	4179	
58-4-1351	BBE5	GDA	56	241234	6028736	Open site	Destroyed	Artefact :-	15	103540,103719,104278
	Contact			Recorders	Doctor Julie Dibden, NSW Archaeology Pty Ltd, NSW Archaeology Pty Ltd			Permits	3971,4120,4740	
58-4-1361	Banksia Extension 3	GDA	56	244356	6028986	Open site	Not a Site	Artefact :-		103693,103694,104308
	Contact			Recorders	DPH - Armidale, Access Archaeology and Heritage Pty Ltd, Ms. Sarah Robertson, Mr. J			Permits	4102,4712	
58-4-1362	Banksia Extension 1	GDA	56	244339	6029055	Open site	Valid	Artefact :-		103694,104308
	Contact			Recorders	Access Archaeology and Heritage Pty Ltd, Mr. Douglas Williams			Permits	4306	
58-4-1363	Banksia Extension 2	GDA	56	244346	6029016	Open site	Valid	Artefact :-		103694,104308
	Contact			Recorders	Access Archaeology and Heritage Pty Ltd, Mr. Douglas Williams			Permits	4306	
58-4-1470	Oaks Ranch SU11	GDA	56	244382	6032452	Open site	Valid	Artefact :-		

Report generated by AHIMS Web Service on 12/08/2022 for Kate Storan for the following area at Datum :GDA, Zone : 56, Eastings : 238414.0 - 246414.0, Northings : 6024704.0 - 6032704.0 with a Buffer of 0 meters. Number of Aboriginal sites and Aboriginal objects found is 76

This information is not guaranteed to be free from error omission. Heritage NSW and its employees disclaim liability for any act done or omission made on the information and consequences of such acts or omission.

Page 5 of 6



AHIMS Web Services (AWS)

Extensive search - Site list report

Your Ref/PO Number : 22SYD3362
Client Service ID : 707757

SiteID	SiteName	Datum	Zone	Easting	Northing	Context	Site Status **	SiteFeatures	SiteTypes	Reports
	Contact			Recorders	Doctor Julie Dibden, NSW Archaeology Pty Ltd			Permits		

** Site Status

Valid - The site has been recorded and accepted onto the system as valid

Destroyed - The site has been completely impacted or harmed usually as consequence of permit activity but sometimes also after natural events. There is nothing left of the site on the ground but proponents should proceed with caution.

Partially Destroyed - The site has been only partially impacted or harmed usually as consequence of permit activity but sometimes also after natural events. There might be parts or sections of the original site still present on the ground

Not a site - The site has been originally entered and accepted onto AHIMS as a valid site but after further investigations it was decided it is NOT an aboriginal site. Impact of this type of site does not require permit but Heritage NSW should be notified

Report generated by AHIMS Web Service on 12/08/2022 for Kate Storan for the following area at Datum :GDA, Zone : 56, Eastings : 238414.0 - 246414.0, Northings : 6024704.0 - 6032704.0 with a Buffer of 0 meters. Number of Aboriginal sites and Aboriginal objects found is 76

This information is not guaranteed to be free from error omission. Heritage NSW and its employees disclaim liability for any act done or omission made on the information and consequences of such acts or omission.

Page 6 of 6

